

**The
Grace
Hadman
Netball
Court**

Lilongwe
Malawi



**BUILDING
MALAWI**



- Small UK Based Charity working in Malawi for 15 years
- Build Schools, Libraries and Sports Facilities
- Vision to bring Education, Sports and Community together in one place

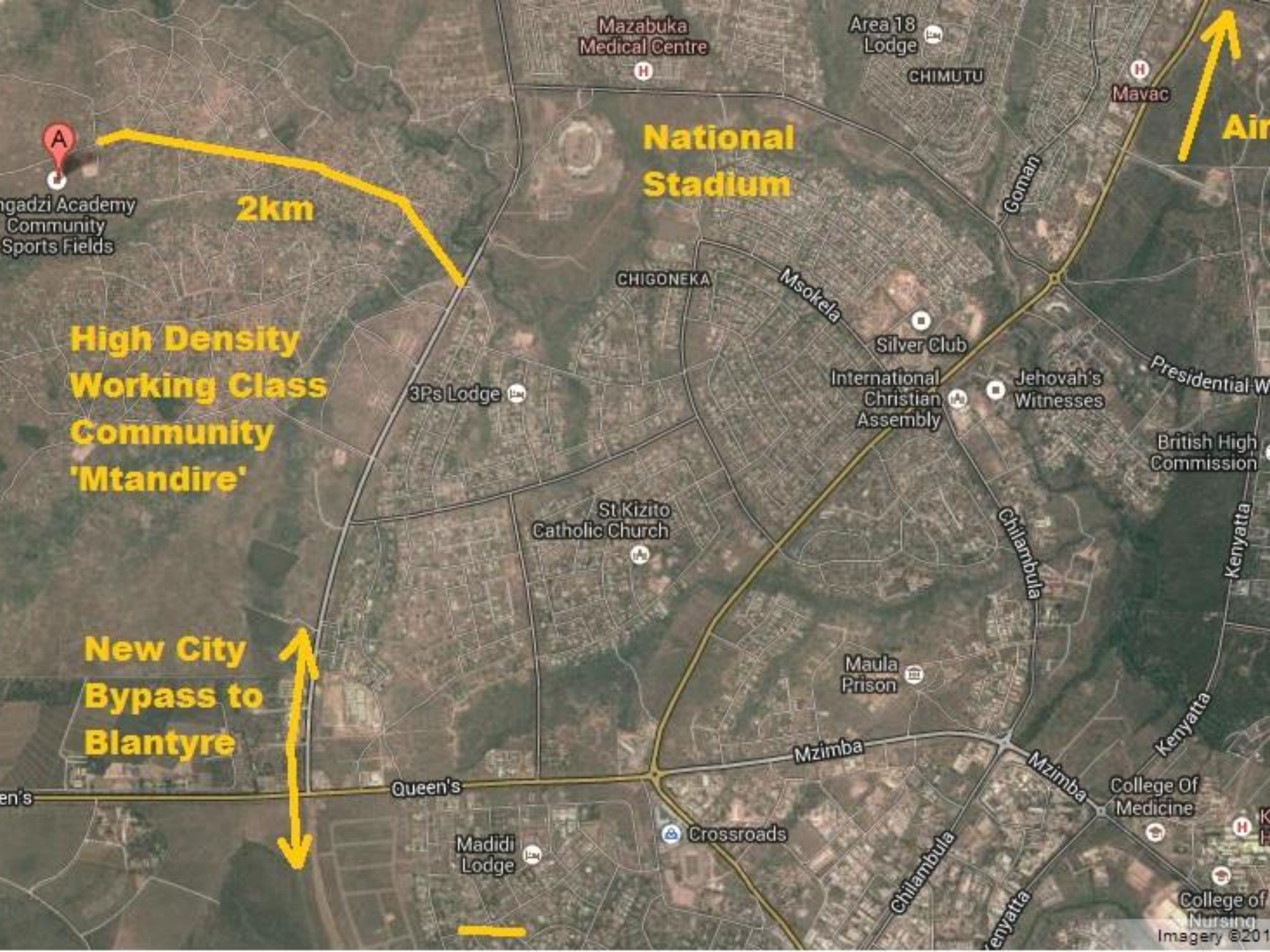
Welcome to LINGADZI ACADEMY

A place to play, learn and grow.



Supported by:
Building Malawi





Mazabuka Medical Centre

Area 18 Lodge

CHIMUTU

Mavac

Air

National Stadium

2km

ngadzi Academy
Community Sports Fields

High Density
Working Class
Community
'Mtandire'

CHIGONEKA

Msokela

3Ps Lodge

Silver Club

International
Christian
Assembly

Jehovah's
Witnesses

Presidential W

British High
Commission

St Kizito
Catholic Church

Chilambula

Kenyatta

New City
Bypass to
Blantyre

Maula
Prison

Mzimba

Mzimba

Kenyatta

en's

Queen's

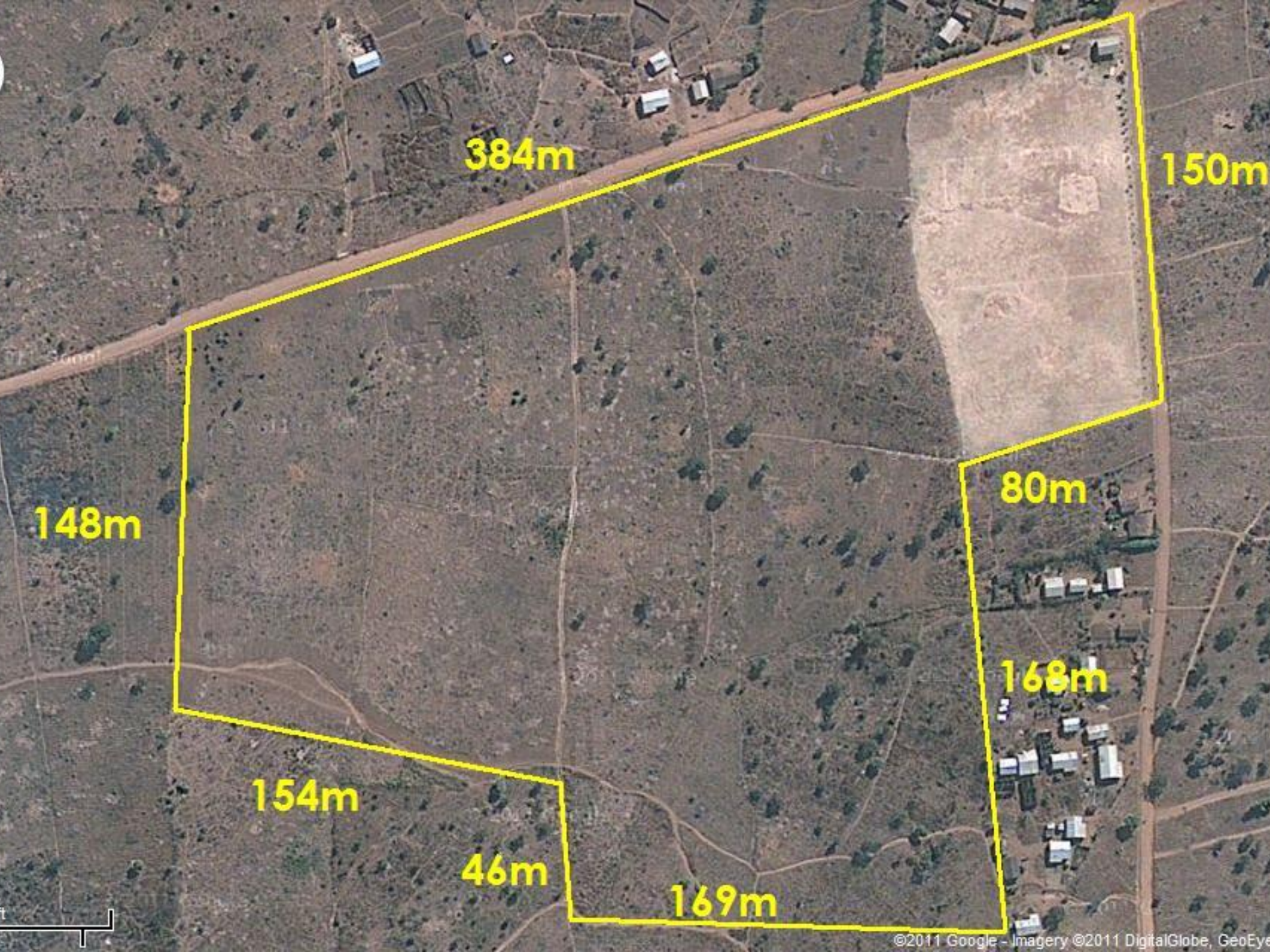
Madidi
Lodge

Crossroads

College Of
Medicine

College of
Nursing

Imagery ©201



384m

150m

148m

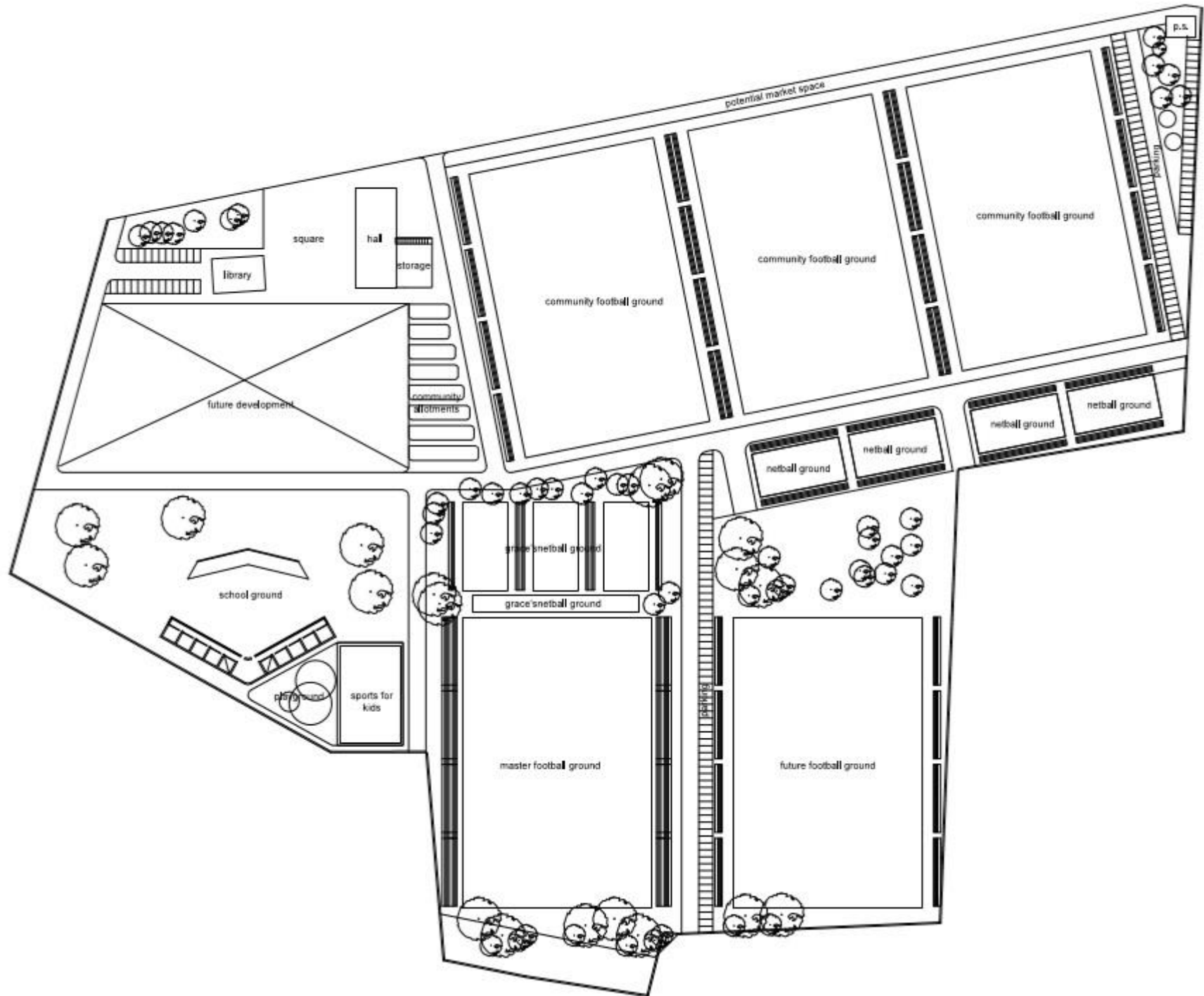
80m

154m

168m

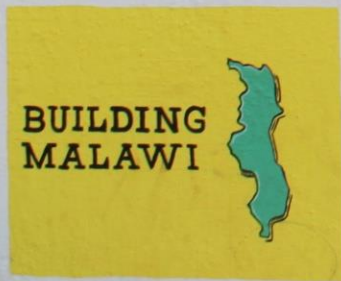
46m

169m



Welcome to LINGADZI ACADEMY

A place to play, learn and grow .



Supported by :
www.buildingmalawi.com



A place to play



A place to learn



A place to come together





**The girls in Malawi
love spending time
together and
playing sport**



There are always a lot of jobs at home

The girls LOVE netball



The money raised has been spent to build a netball court and pavilion for girls across the city



We cleared some land



And started building



It was hot and hard work



But our builders had fun



It soon took shape





Grace's netball court is right at the heart of Lingadzi Academy





It was dry and dusty...



The thatch roof gave us shade





♪ 23.11.2013 ♪

**We arranged
a party called
“Lilongwe
Love”**



**23rd of November 2013!
Lingadzi Academy
Lilongwe, Malawi**

**If you are a buSineSS and would
like to operate at the feStival,
or you are a band or artiSt that
would like to perform, pleaSe
contact uS**



Lots of people came



We had fun!







Everyone danced!



When the rains came we started
planting grass



We planted colourful trees around Grace's court





The grass grew



....and grew



The concrete was
mixed



A photograph of a traditional building with a thatched roof and a brick base, situated behind a large, flat concrete court. The foreground shows a concrete curb and a pile of broken stones. The sky is cloudy.

And the court was ready



Thank you!